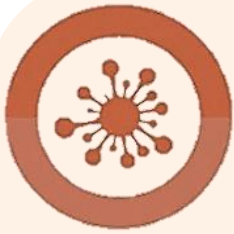


DISCOVER YOUR GENES,
UNDERSTAND YOUR HEALTH!



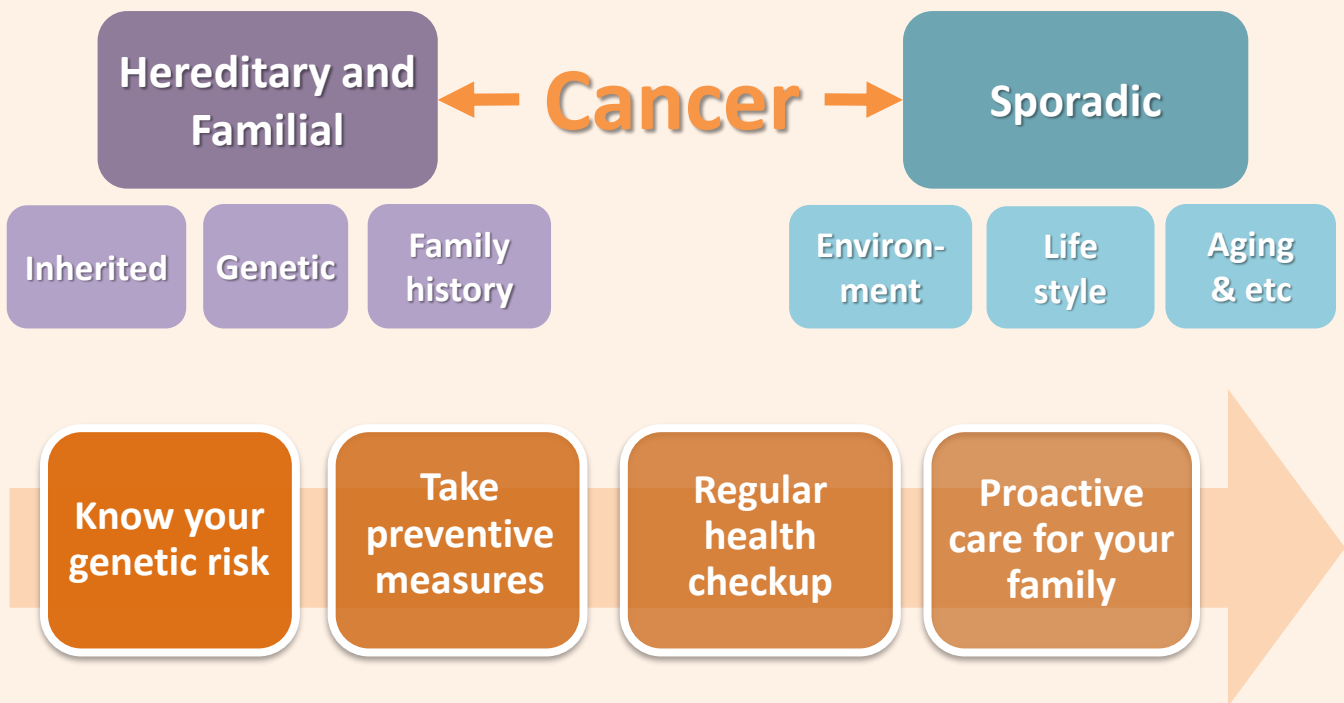
GGA Hereditary Cancer Risk Analysis



is a genetic test used to determine a healthy adult's genetic risks for cancer.

Did you know that Cancer can be Inherited?

Cancer is the second leading cause of death globally. Most cancers are "sporadic," or seemingly due to random chance and without an identifiable cause. But about 5-10% of certain cancers are due to harmful genetic changes, called mutations, that are passed down through families. These people have a higher risk of developing the disease than those in the general public.



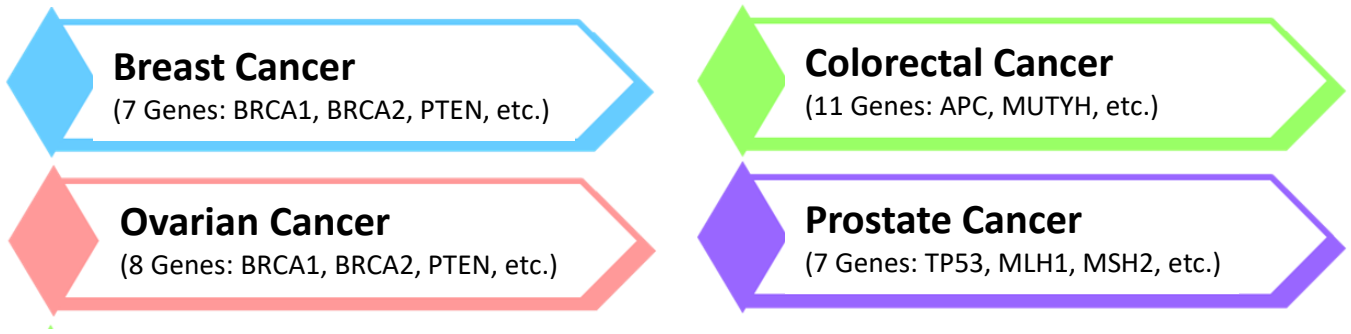
Ask your physician about this test now!



Why you should know your risk?

- Discover your genetic risk of a particular disease for early prevention and treatment.
- Detect cancer early improves cancer outcome.
- Find if you have genes that may pass increased cancer risk to your children.
- Provide information to guide your health care.

Genes tested:

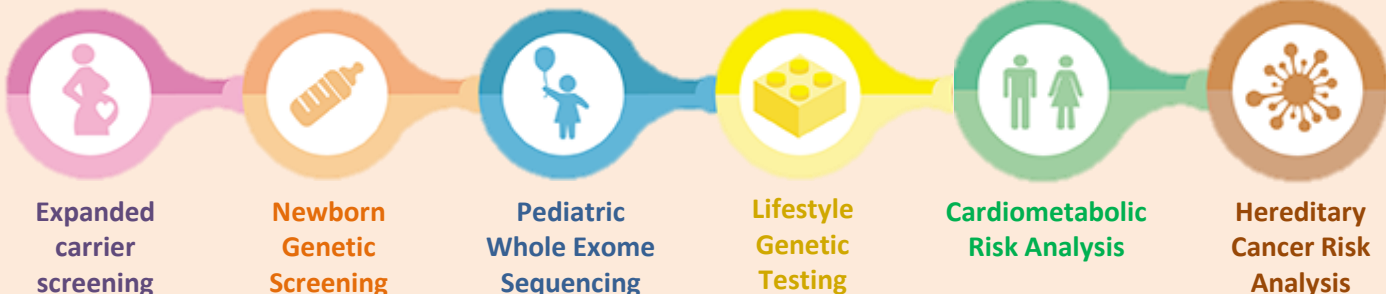


Who should take this test?

- Adults (>18 years old) who would like to understand their risk
- Adults with family history of cancer

Personal Genetic Databank

- ✓ Maximize the genetic information output within one test!
- ✓ 3R: Right information / Right time / Right health management



For more information, please visit www.GGA.ASIA



Genetics Generation Advancement Corp.
No. 28, Ln. 36, Xinhu 1st Rd., Neihu Dist., Taipei City 11494, Taiwan
WWW.GGA.ASIA

Genetics Generation Asia Sdn. Bhd
Unit 32-01, Level 32, Vertical Corporate Tower B, Bangsar South, 59200
Kuala Lumpur, Malaysia.